

bikeep

emicro

SL0002-1
Smart Locker

Rectangular

Main features

Dimensions

Operating environment

Power requirements



www.emicro.com.au
hello@emicro.com.au

0400 804 562



MAIN FEATURES



Secure locking

Industrial lock, robust design

1

Led indications

Available / Booked / Locked

2

Smartcontroller inside

Internet connected, alarm forwarding

3

OPTIONAL ADD-ON

Contactless card reader

13.56Mhz reader

4



Available Booked Locked

1

bikeep
APP



Available on the
Google play

Download on the
App Store

BIKEEP.COM/APP

2



3



+372 566 79 992
help@bikeep.com

App only



Available Booked Locked

1

bikeep
APP



Available on the
Google play

Download on the
App Store

BIKEEP.COM/APP

2



3



+372 566 79 992
help@bikeep.com

App + Contactless card

4

CONTACTLESS
CARD
SWIPE AREA

Available Booked Locked



1

bikeep
APP

RFID
CONTACTLESS
CARD



Available on the
App Store

Download on the
Google play

BIKEEP.COM/APP

2

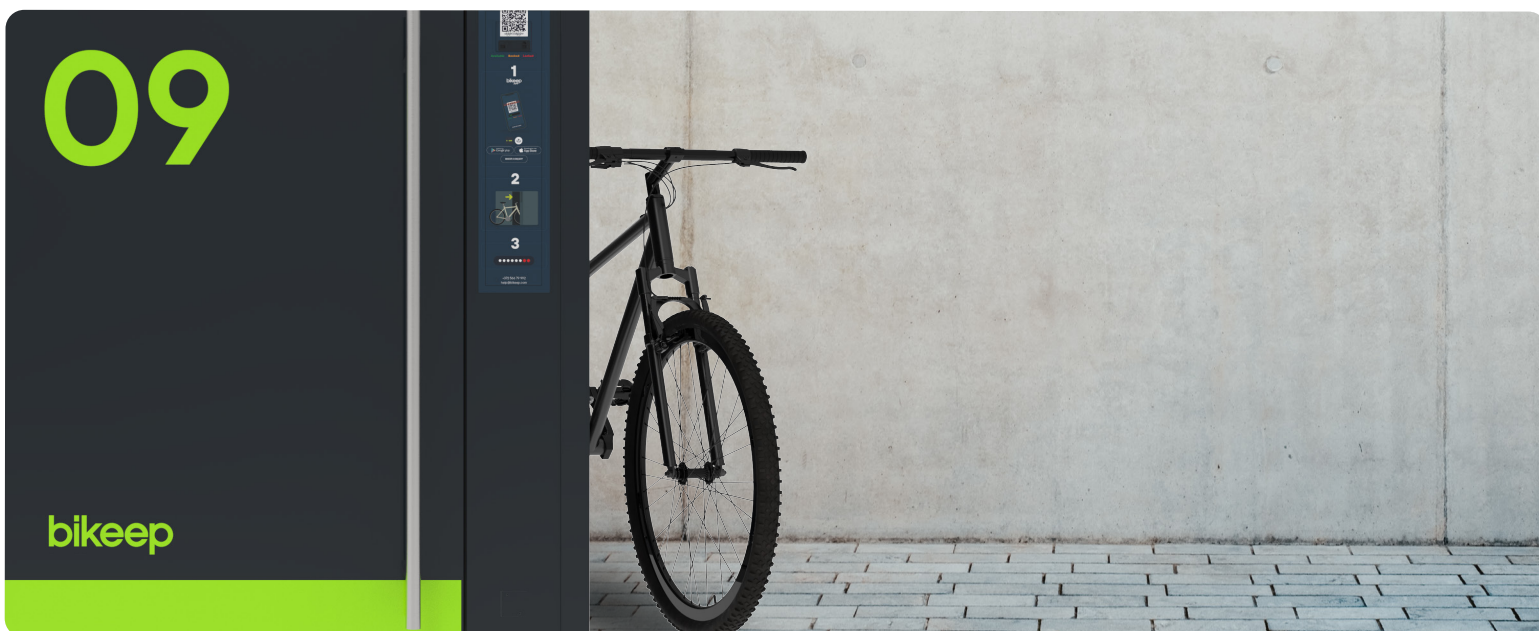
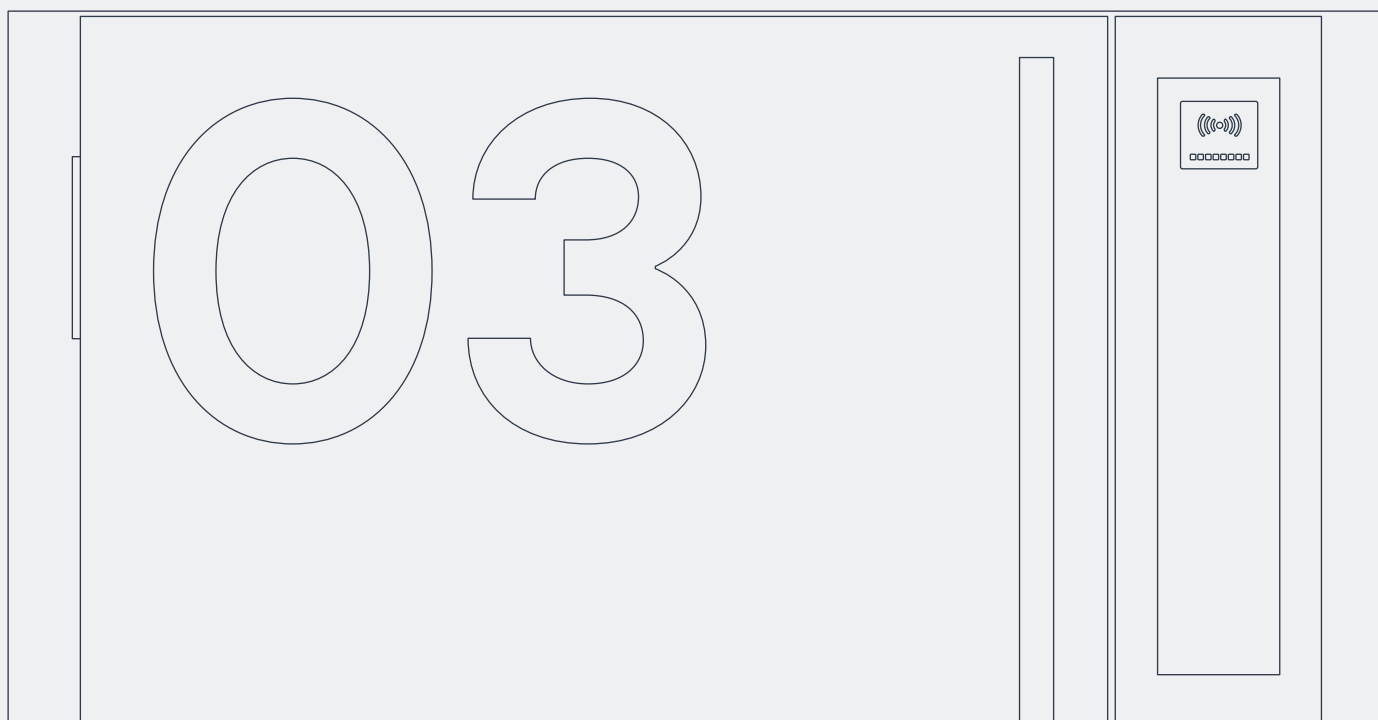
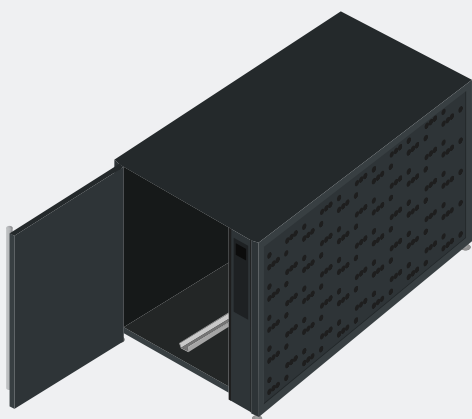


3



+372 566 79 992
help@bikeep.com

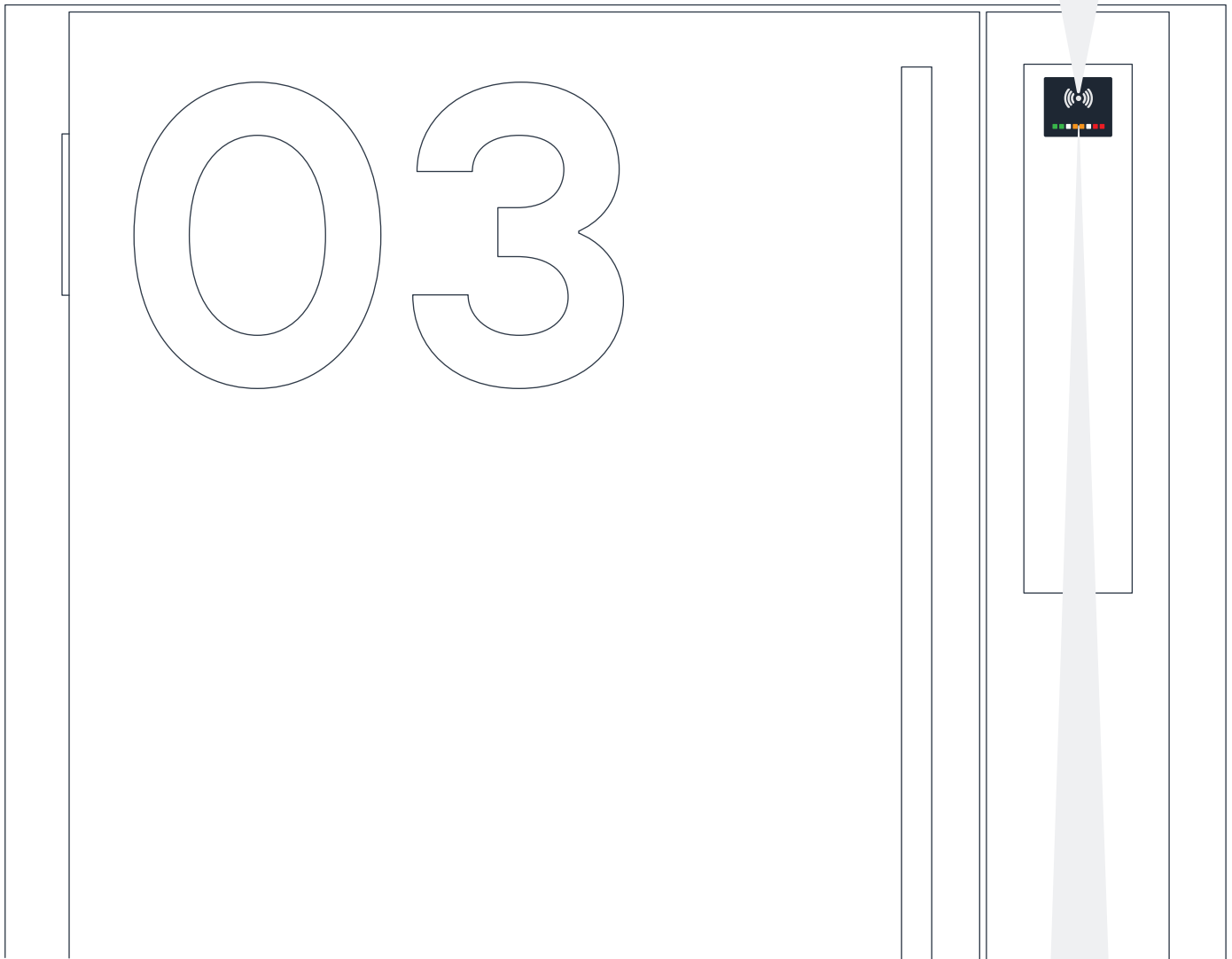
Secure personal bike locking



Contactless card reader



- The card reader module provides you with access control via contactless cards or key fobs.
- The contactless card reader module supports most 13.56MHz cards (13.56MHz ISO14443A compatible).



Led indication

Status (indication) LED shows the current state of the ike station dock.

Available



Booked

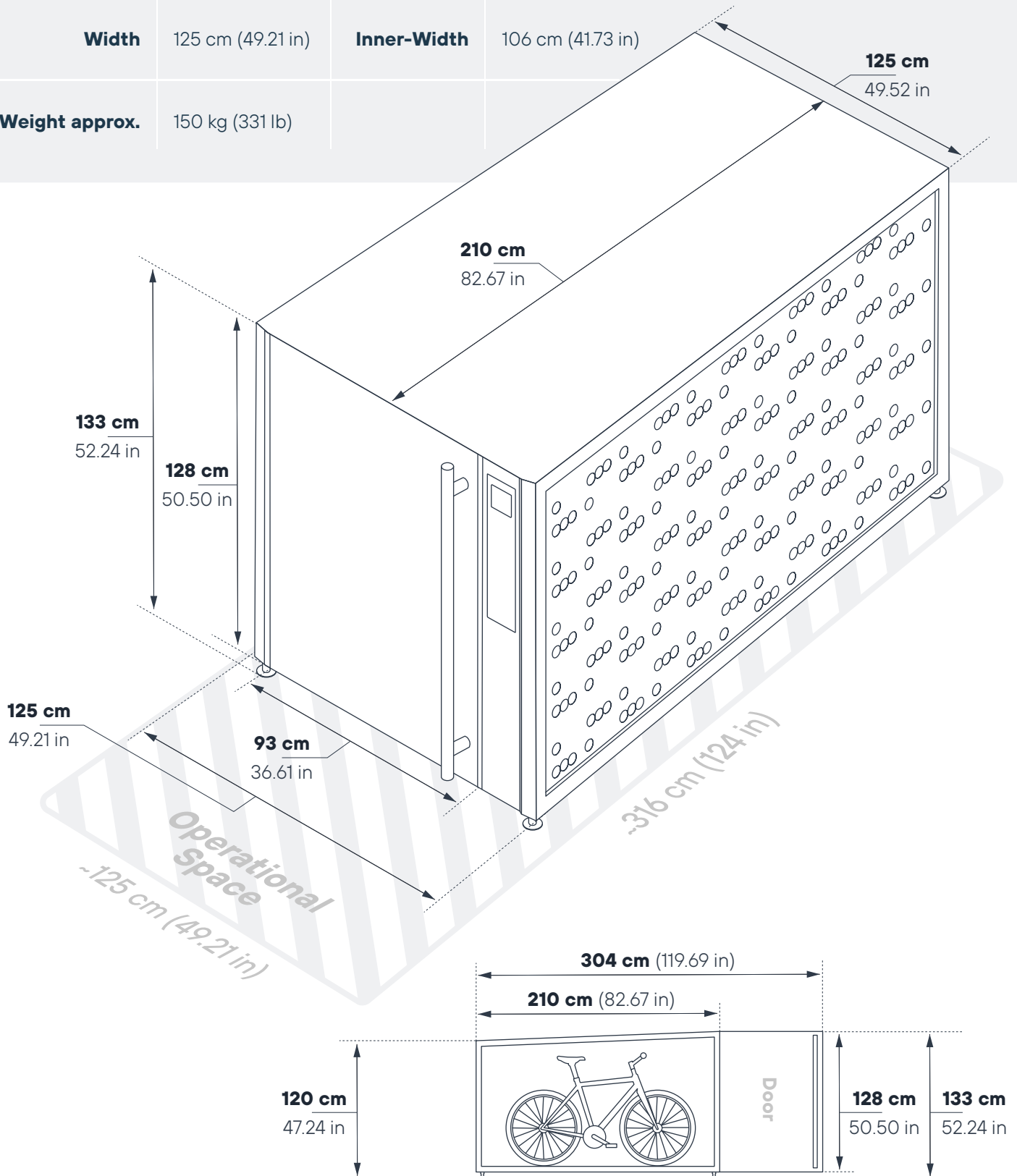


Locked

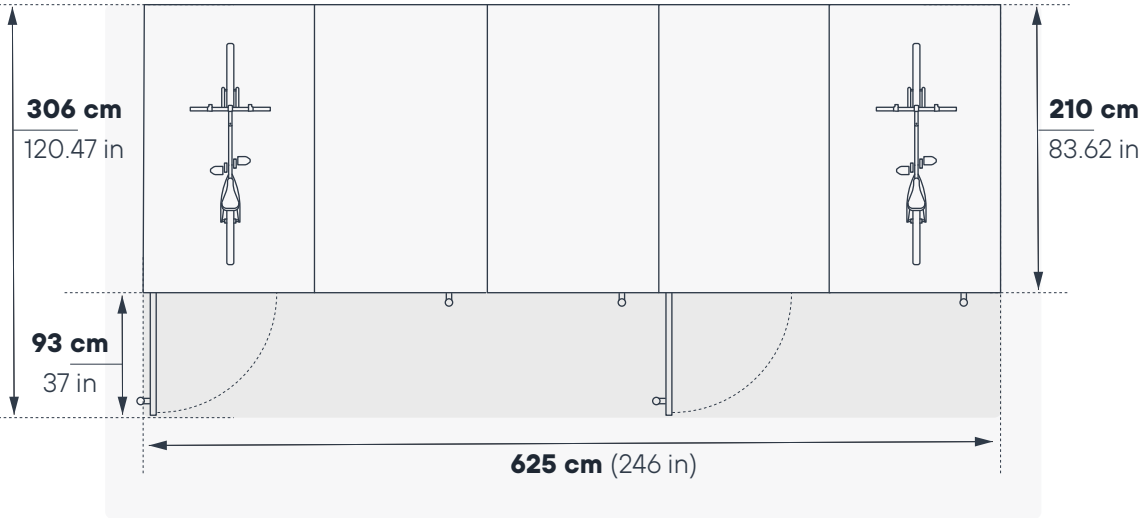
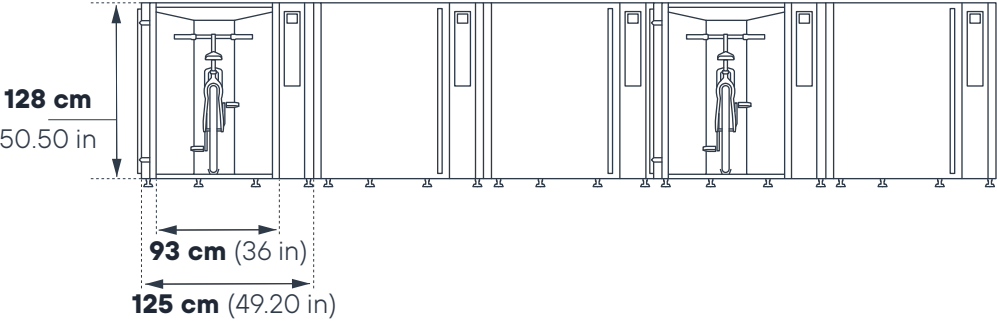


DIMENSIONS

Height	133 cm (52.36 in)	Inner-Height	125 cm (49.21 in)
Length	220 cm (86.61 in)	Inner-Length	203 cm (79.92 in)
Width	125 cm (49.21 in)	Inner-Width	106 cm (41.73 in)
Weight approx.	150 kg (331 lb)		



Example layout



OPERATING ENVIROMENT



Operating temperature

-35 °C to 70 °C



Ingress Protection Rating

IP55



Operating humidity

10% to 90% non-condensing



MTBF

230 000h

Materials

- Steel sheet metal
- Corrosivity category C4
- Teknos INFRALIT powder coating

09

bikeep



POWER REQUIREMENTS

Locking only

Input voltage: 24DC or 110/230VAC
1W per dock and per the main controller 10W

Nr. of docks	Power consumption	Power requirement
5 dock station	15W	Less than 1A @230VAC or Less than 1A @110VAC
10 dock station	20W	Less than 1A @230VAC or Less than 1A @110VAC
15 dock station	25W	Less than 1A @230VAC or Less than 1A @110VAC
25 dock station	40W	Less than 1A @230VAC or Less than 1A @110VAC

Locking & Charging station

Input voltage: 110/230VAC
⚠ Chargers require line power 110/230VAC

Nr. of docks	Power consumption	Power requirement for E-charger Station
5 dock station	0.75kW	3.25A @230VAC or ~7 @110VAC
10 dock station	1.5kW	6.5A @230VAC or ~14A @110VAC
20 dock station	3kW	13A @230VAC or ~27A @110VAC

Calculations based on 150W chargers that are charging at full load.
The actual power requirements may differ.

